



# NPS-RTCA



Rivers, Trails and Conservation Assistance Program

# White Pine County Recreation Plan



Brandon Stocksdale  
National Park Service RTCA Program  
[Brandon.Stocksdale@nps.gov](mailto:Brandon.Stocksdale@nps.gov)  
385-630-6605

Kyle Horvath  
White Pine County Tourism Director  
[kyle.horvath@elynevada.net](mailto:kyle.horvath@elynevada.net)  
775-289-3720

NPS-RTCA

Rivers, Trails and Conservation Assistance Program



The Rivers, Trails, and Conservation Assistance Program helps carry out the National Park Service's mission by supporting community-led outdoor recreation and conservation projects.





NPS-RTCA

Rivers, Trails and Conservation Assistance Program



Building healthy communities through parks, trails, and outdoor opportunities



Conserving natural lands, rivers, and watersheds



Engaging youth in outdoor recreation and stewardship



Strengthening the organizational capacity of project partners



Connecting and collaborating with national parks





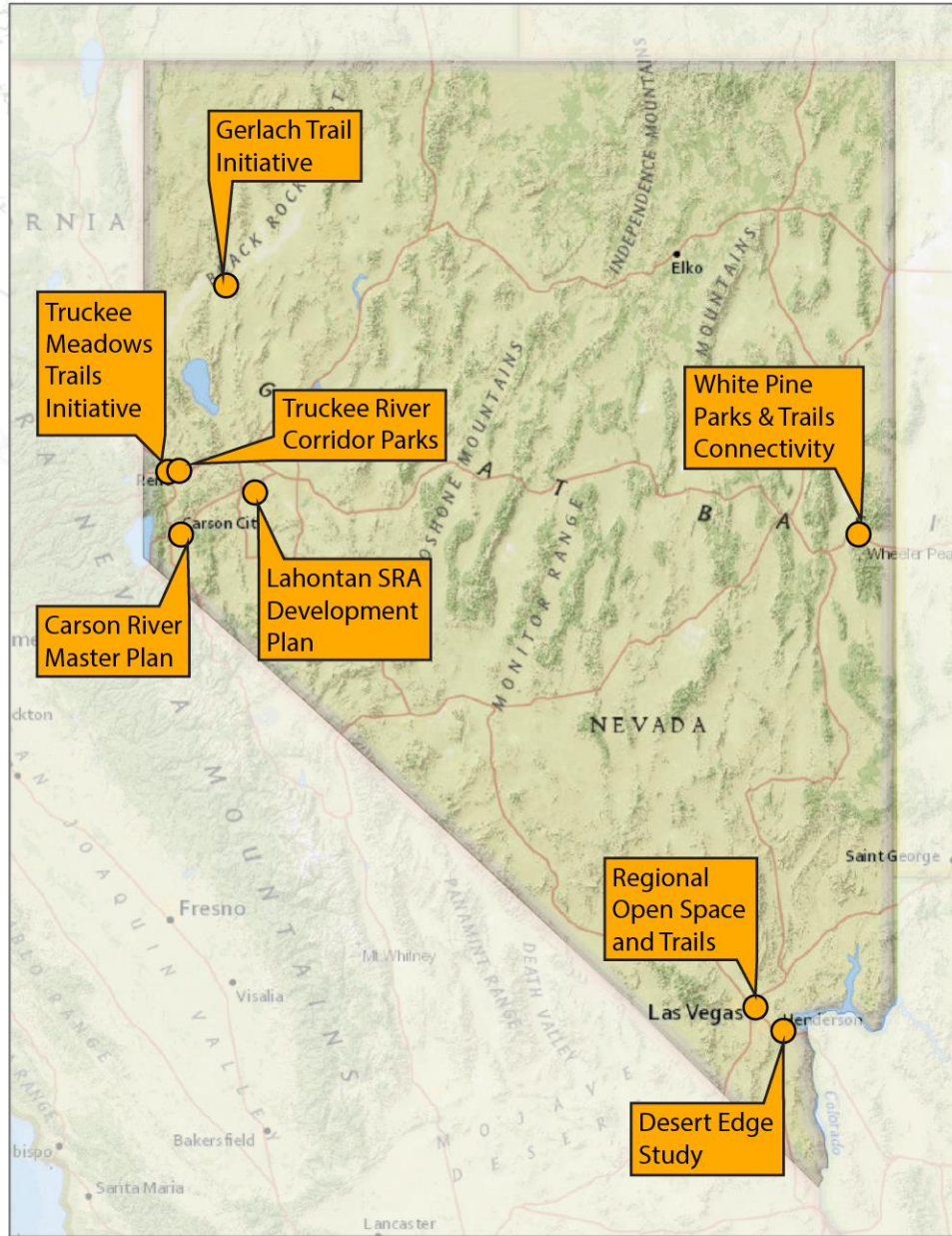


- Help communities organize an idea into a project.
- Engage the community in the planning and design process.
- Support a thorough decision-making process.
- Build trust and commitment around a community vision.
- Facilitate the development of a vision, strategies, best practices, and design standards.
- Identify funding opportunities, partnerships, and other resources.
- Increase organizational capacity to implement and successfully maintain the project in the long term.



# NPS-RTCA

Rivers, Trails and Conservation Assistance Program



## Recent NPS RTCA Nevada Projects





# Vision Statement

Enhance outdoor recreation in White Pine County to improve the lives of residents and visitors by increasing access to public lands, proactively managing visitation, and developing long-term local partnerships.



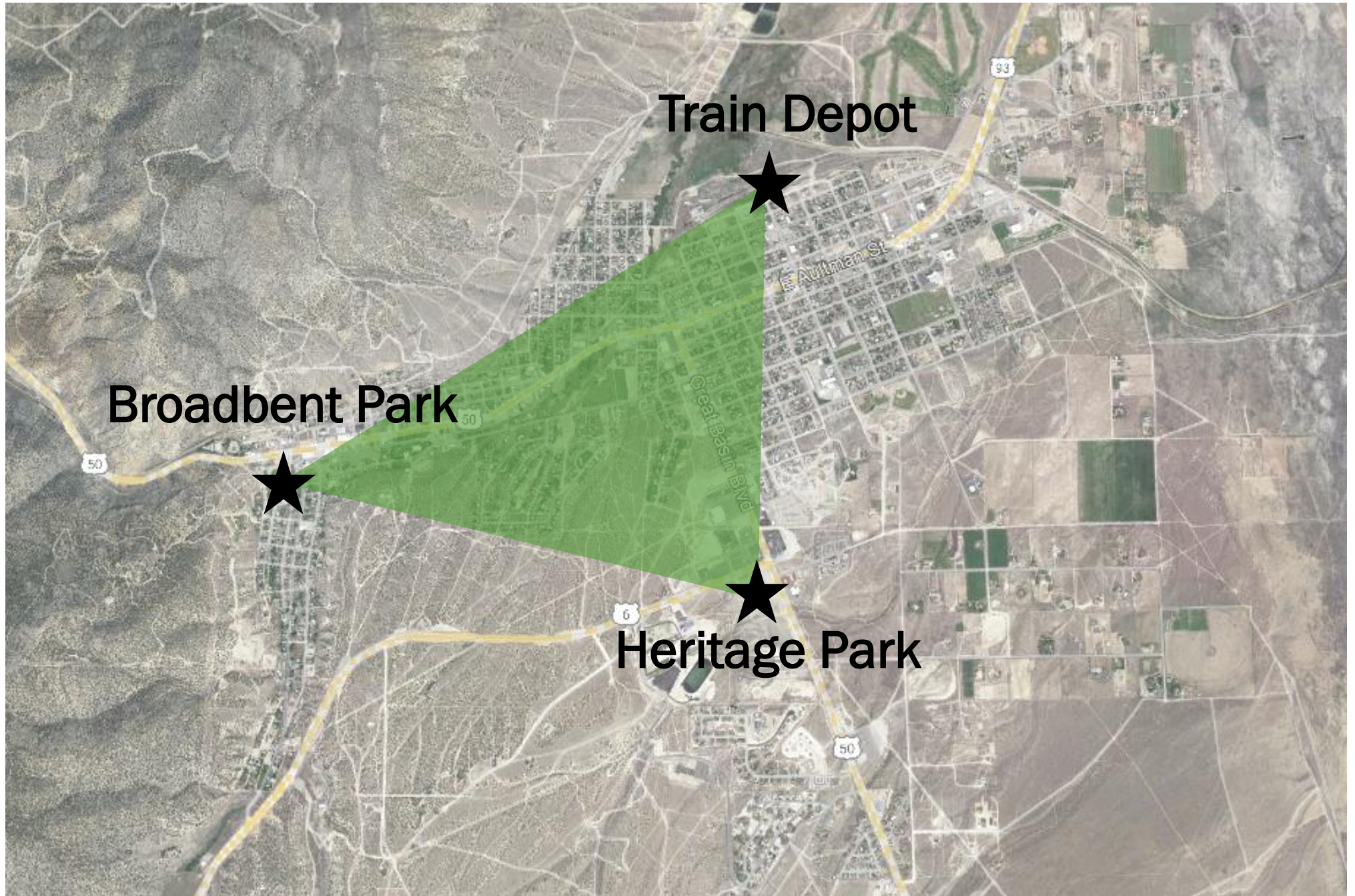
# Desired Conditions

- ❖ Preserve access for outdoor recreation by protecting corridors for trails, wildlife, and open space.
- ❖ Promote Baker and Ely as recreation destinations and improve local quality of life by improving trailheads, signage, and connections to public lands.
- ❖ Develop diverse, year-round, managed recreation opportunities.
- ❖ Use cooperative partnerships to address increased visitation in the county.
- ❖ Enhance dark skies to preserve White Pine County as a national astro-tourism destination.



**NPS-RTCA**

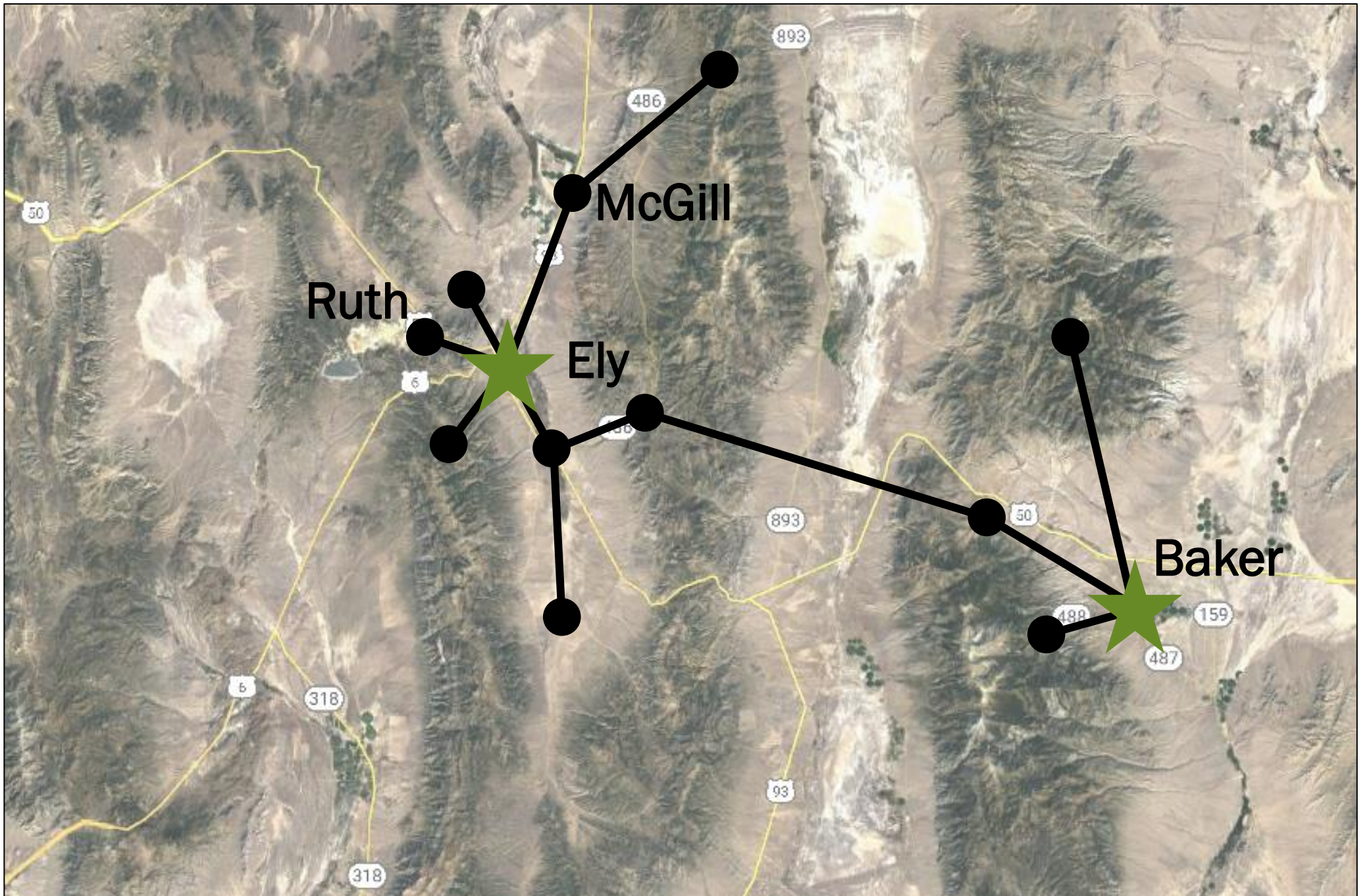
Rivers, Trails and Conservation Assistance Program





# NPS-RTCA

Rivers, Trails and Conservation Assistance Program







# Proposed Connections

1. Garnett Hill to Railroad Station Link
2. Heritage Park to Ice Plant Trail Link
3. Heritage Park to Comins Lake Shared Use Path
4. Ruth Railroad Trailhead
5. McGill to Duck Creek Trail Connection
6. Cave Lake State Park to Sacramento Pass Trail
7. Sacramento Pass to Baker Trail Connection
8. Baker Area Trails Master Plan



# Travel Nevada Destination Development Grant

- ❖ Promote collaboration between state and local resources.
- ❖ Utilize outdoor recreation to increase local quality of life and economic development.
- ❖ Support sustainable recreation opportunities and proactive management to prevent overcrowding or damage to local resources.
- ❖ Recruit appropriate services, businesses, guides, etc. that can promote White Pine County as a destination.

NPS-RTCA

Rivers, Trails and Conservation Assistance Program





# Questions?

**NPS-RTCA**

Rivers, Trails and Conservation Assistance Program



Brandon Stocksdale  
National Park Service RTCA Program  
[Brandon\\_Stocksdale@nps.gov](mailto:Brandon_Stocksdale@nps.gov)  
385-630-6605

Kyle Horvath  
White Pine County Tourism Director  
[kyle.horvath@elynevada.net](mailto:kyle.horvath@elynevada.net)  
775-289-3720